

AutoWeir

The AutoWeir is a device designed to remove concentrated floating solids skimmed from the top of the recirculation tank or pit which is then pumped to a Palin® Paint Sludge Consolidator or another consolidator system. It operates based on consolidator supply pump suction rate, as well as the liquid level in the tank/pit.

As the liquid inside the AutoWeir is drawn down, the float lowers, allowing continued skimming of the tank/pit surface. Variations in the operating level of the tank/pit result in an automatic adjustment of the AutoWeir's skimming level.

AutoWeir Features

- Stainless steel construction
- Standard fixed position \pm 1/2 inch to 2 inches based on design criteria.
- Custom designs available.
- Top, bottom, or side suction connection choices are available.



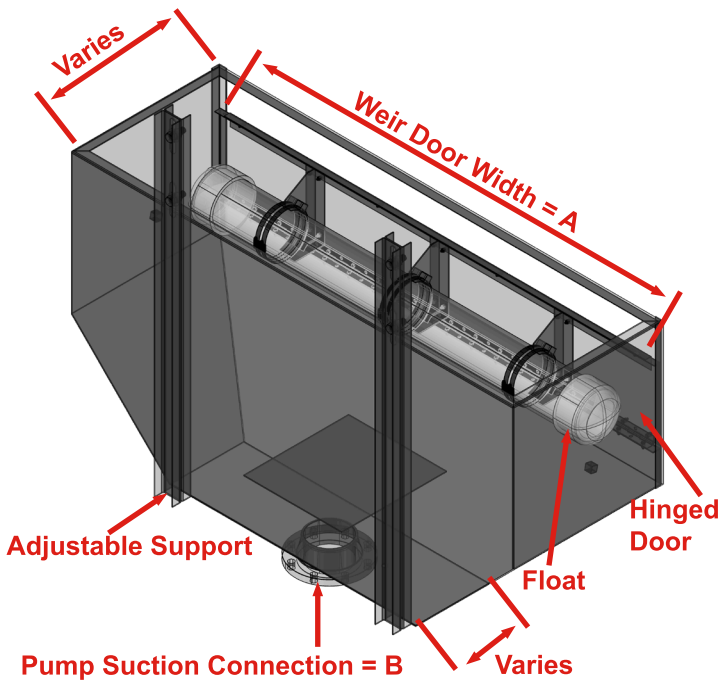
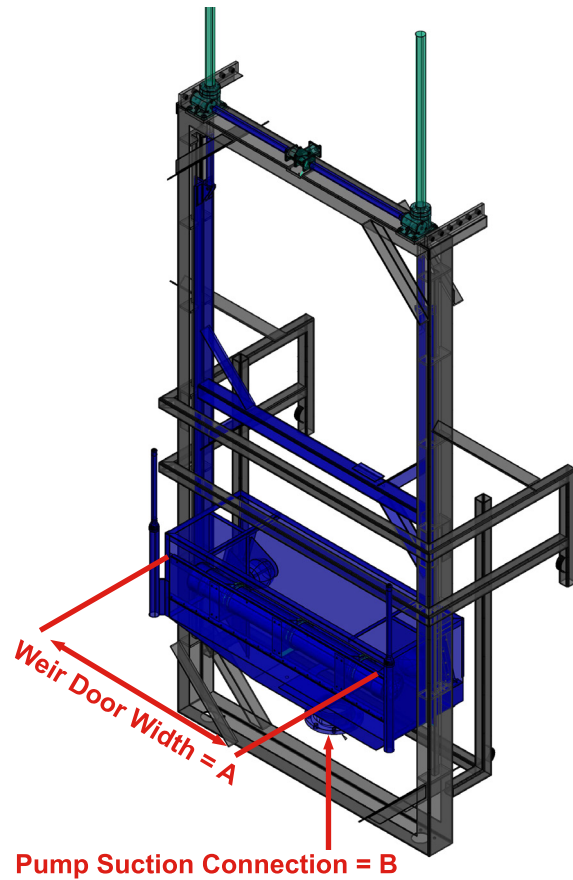
AutoWeir Boxes



Fixed AutoWeir installed in paint recirculation tank

Technical Data

Moving AutoWeir			
Model	A	B	Shipping Weight
AWAE036H	36" 914mm	4" FLG 100 DIN	800 lbs 363 kg
AWAE048H	48" 1219mm	4" FLG 100 DIN	1,000 lbs 454 kg
AWAE072H	72" 1829mm	6" 150 DIN	1,300 lbs 590 kg
AWAE096H	96" 2438mm	8" 200 DIN	1,900 lbs 862 kg



Fixed AutoWeir			
Model	A	B	Shipping Weight
AWFB036H	36" 914mm	4" FLG 100 DIN	200 lbs 91 kg
AWFB048H	48" 1219mm	4" FLG 100 DIN	250 lbs 113 kg
AWFB060H	60" 1524mm	6" FLG 150 DIN	300 lbs 137 kg
AWFB072H	72" 1829mm	6" 150 DIN	350 lbs 159 kg
AWFB096H	96" 2438mm	8" 200 DIN	450 lbs 204 kg

Scan here to visit
our website.

