

ALSI Autoweir



The ALSI Autoweir is designed to maximize floating solids concentration pick up in a tank or pit for supply to an ALSI/Palin consolidation device. The principle design innovation is that it operates based on consolidator supply pump suction rate, as well as the liquid level in the tank/pit. As the liquid inside the autoweir is drawn down, the float lowers, allowing skimming of the tank/pit surface. Variations in the operating level of the tank/pit result in an automatic adjustment of the Autoweir's skimming level.



ALSI Autoweir

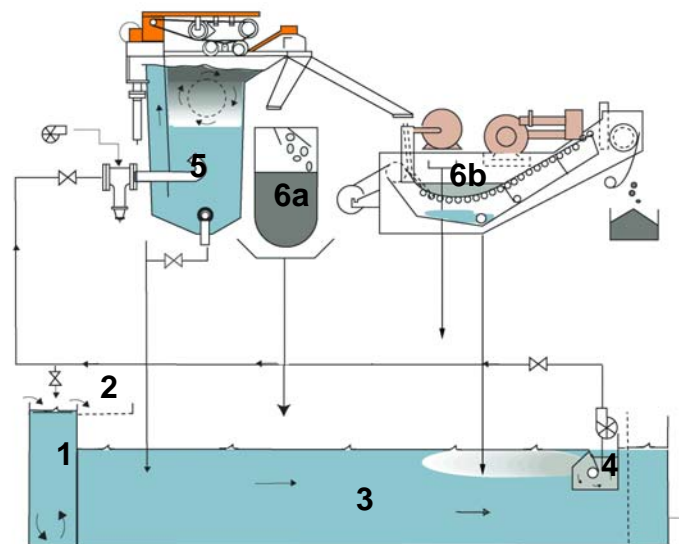
ALSI Features:

- **Stainless Steel Construction**
- **Adjustable Models \pm Two Feet**
- **Fixed Position \pm Four Inches**
- **Custom Designs Available**
- **Top, Bottom, and Side Suction Connections Optional**

System Design Review

ALSI examines the entire system, whether totally new or retrofit. We analyze the chemical program, solids loading, and hydraulics to provide the engineered solution for sludge removal.

- (1) Hydraulics Review:** In-depth study of system flow characteristics and the impact on equipment sizing.
- (2) Roughing Screen:** Simple, cleanable, large debris removal.
- (3) Flotation Zone:** Solids loading and mass balance are compared to flotation chemical efficiency.
- (4) Auto-Weir:** Patented, self-adjusting, solids concentrator is utilized to maximize tank/pit efficiency and minimize consolidator sizing.
- (5) Consolidator:** P, vertical separation module assists chemical flotation programs. Automatic, self-cleaning design incorporates durable, reliable components.
- (6) Sludge Dewatering:**
 - (a) Bag Systems
 - (b) CheckMark™ Dryers: gravity, vacuum and heat of compression systems increase dewatering efficiency, facilitating solids removal and minimizing volume.



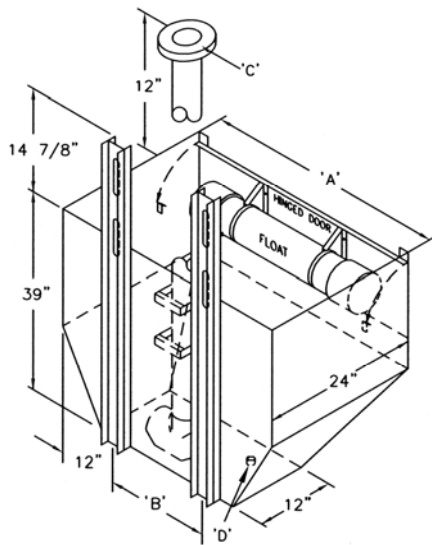
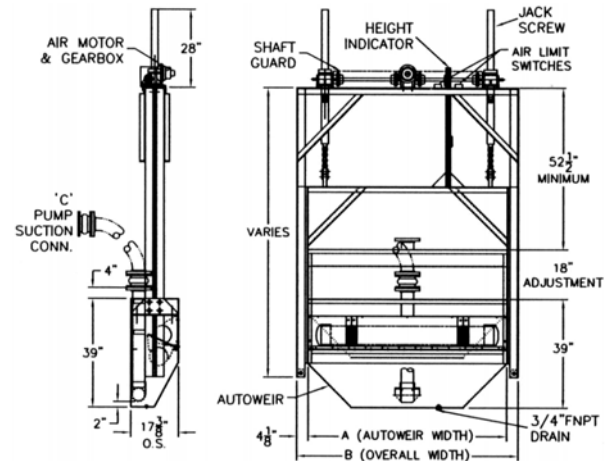
ALSI's Complete System Design Capability

PATENTED

ALSI Autoweir Specifications

Adjustable Autoweirs

MODEL	A	B	C	SHIPPING WT. (LBS.)
WB28H-ADJ	27 3/4"	36"	3" or 4" FLG	700
WB36H-ADJ	36"	44 1/4"	3" or 4" FLG	800
WB48H-ADJ	48"	56 1/4"	3" or 4" FLG	1,000
WB72H-ADJ	72"	80 1/4"	4" or 6" FLG	1,300
WB96H-ADJ	96"	104 1/4"	6" or 8" FLG	1,900

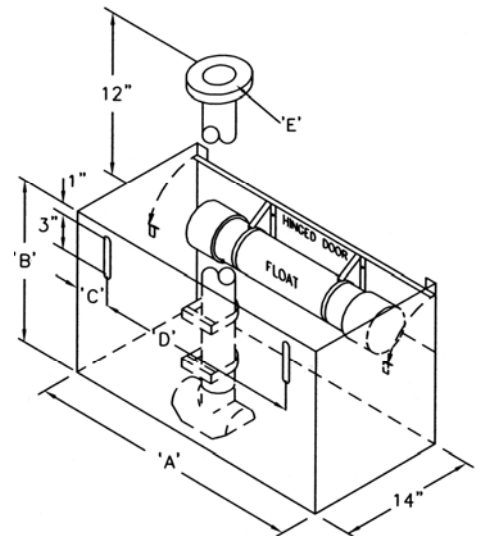


Fixed Position Autoweirs

MODEL	A	B	C	D	SHIPPING WEIGHT (LBS.)
WB36H	36"	12"	3" or 4" FLG	3/8" NPT	200
WB48H	48"	24"	3" or 4" FLG	3/4" NPT	250
WB72H	72"	48"	4" or 6" FLG	3/4" NPT	350
WB96H	96"	72"	6" or 8" FLG	3/4" NPT	450

Fixed Position Autoweirs, Mini-Series

MODEL	A	B	C	D	E	SHIPPING WEIGHT (LBS.)
WB13L	13"	14"	3"	7"	2" FLG	45
WB18L	18"	14"	3"	12"	2" FLG	50
WB24L	24"	14"	3"	18"	2" FLG	60
WB36L	36"	14"	3"	30"	3" FLG	70
WB48L	48"	18"	12"	24"	3" FLG	105



AIR and LIQUID SYSTEMS, Inc.

1680 S. Livernois, Suite 200
 Rochester Hills, MI 48307
 Telephone: (248) 656-3610
 Fax: (248) 656-3620
 E-mail: info@airliquidsystems.biz
 Website: www.alsi.biz

ALSI Liquids Division Products:

- Automatic Backflush Filter
- Consolidator
- Gravity Filter
- Vacuum Filter
- Phosphate Pressure Filter
- Membrane Filtration
- Dewatering Bags & Media
- Autoweir (Patented)
- Heat of Compression
- Hydrocyclone
- Paint Sludge
- Reverse Osmosis
- Watertest Booth